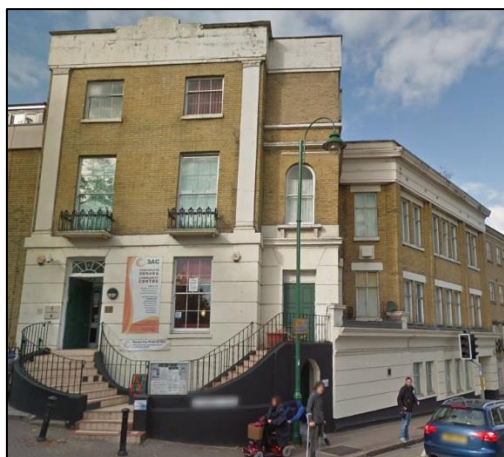


Millennium Third Age Centre



Accessibility: Accessible to all pedestrians. From city centre, cross East Park to Jury's Inn Roundabout (may be signposted for Royal South Hants hospital), follow route under Jury's Inn to St Mary's Road, then past the RSH entrance to Onslow Road. Turn right onto Onslow Road and continue down to Cranbury Terrace (3rd on the left), diagonally opposite the Singh Sabha Gurdwara on Denzil Avenue.

Parking: There is parking on the nearby streets which is limited to 2 hours and must be paid for. There are 2 disabled spaces on Cranbury Place (turning before Cranbury Terrace) a short walk to the Third Age Centre.

Bus: 7 (Southampton City Centre - Portswood - Townhill Park/Midanbury) **U6H** (NOCS - City Centre - Southampton University - General Hospital)

